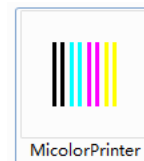




MICOLOR PLUS 工具简介

I INTRODUCE MICOLOR PLUS PRINTER TOOL



1、开启打印机，并与电脑连接。

power on printer and connect it to PC

2、进入C:\Program Files (x86)\MCPrinterBench 文件夹，双击‘MicolorPrinter.exe’程序。

go to C:\Program Files (x86)\MCPrinterBench and run 'MicolorPrinter.exe'



3、点击刷新键‘Refresh’，读取主板信息

click 'Refresh' and read the information of mainboard



“1”为刷新键

“2”为升级键

“3”时间密码

“A”为主板的ID号

“B”为打印机的工作时间限制

“C”为打印机已工作时间

“1” refresh key

“2” is update key

“3” is license key of time

“A” is ID of mainboard

“B” is authorization time

“C” is elapsed time



4、打印机升级

update firmware

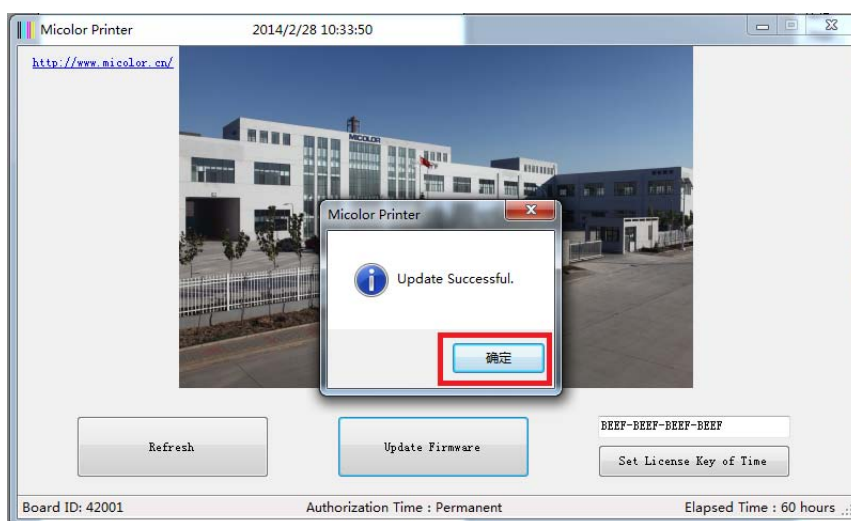
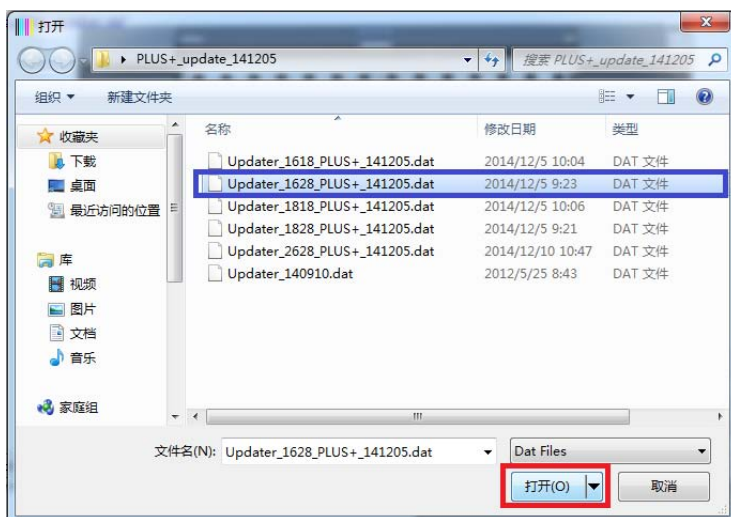
4.1 升级

update

点击 'Update Firmware' 键, 选择对应的升级文件, 并点击 '打开'。程序会提示升级成功。

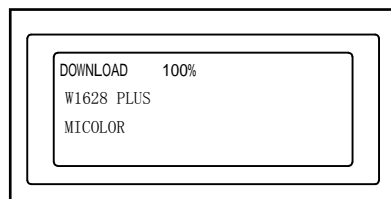
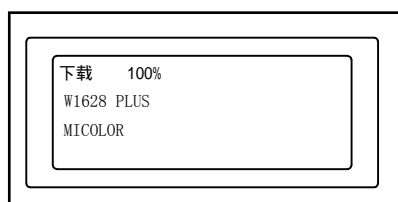
click 'Update Firmware' and select correct file, then click 'open'.

the program will display 'update successful'.



打印机显示屏显示如下：

LCD of printer :



重新启动打印机

restart printer

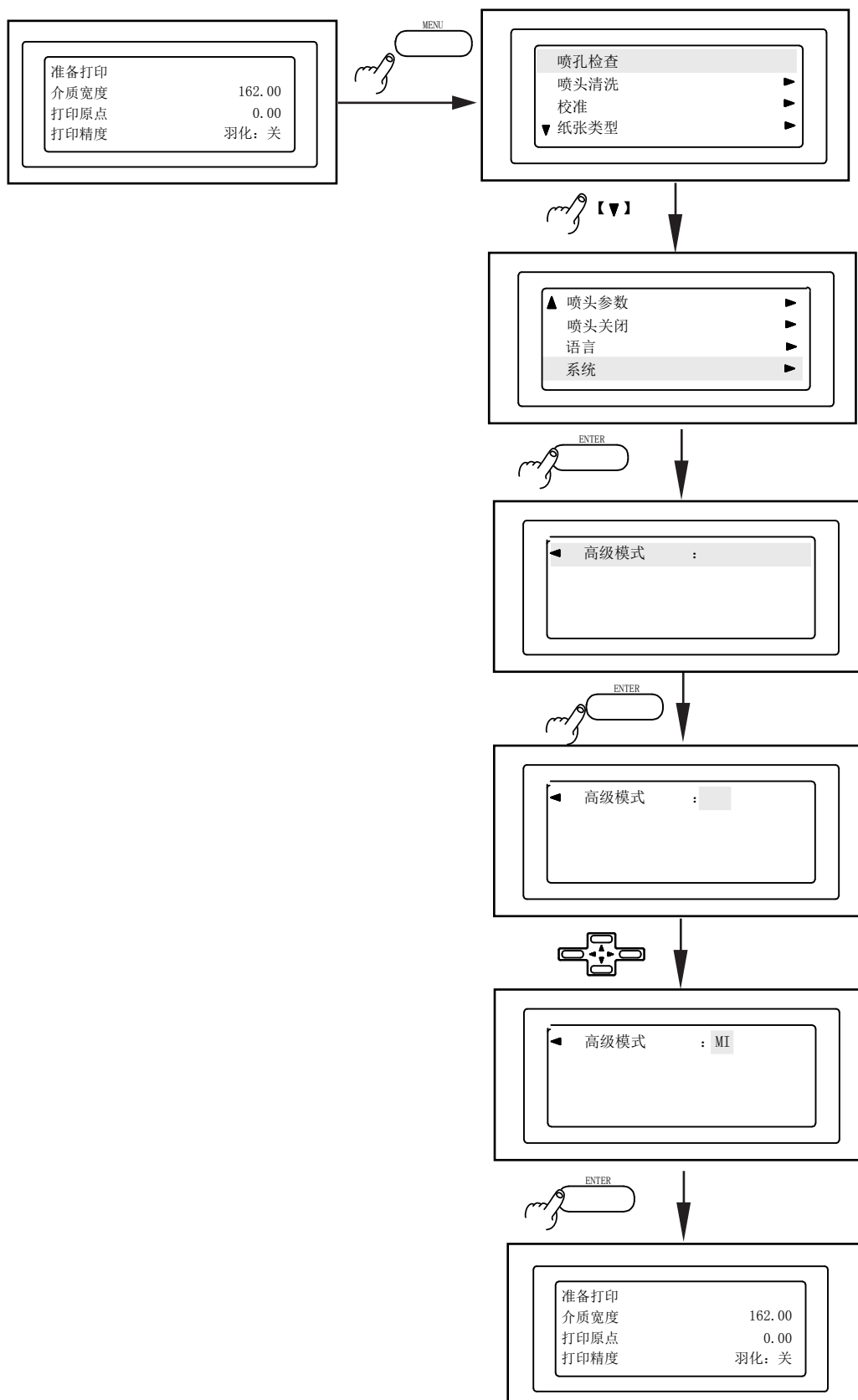


4.2 参数复位 reset config

根据升级包文件夹中的 ' readme.txt ' 文件的提示，进行相关的复位工作。

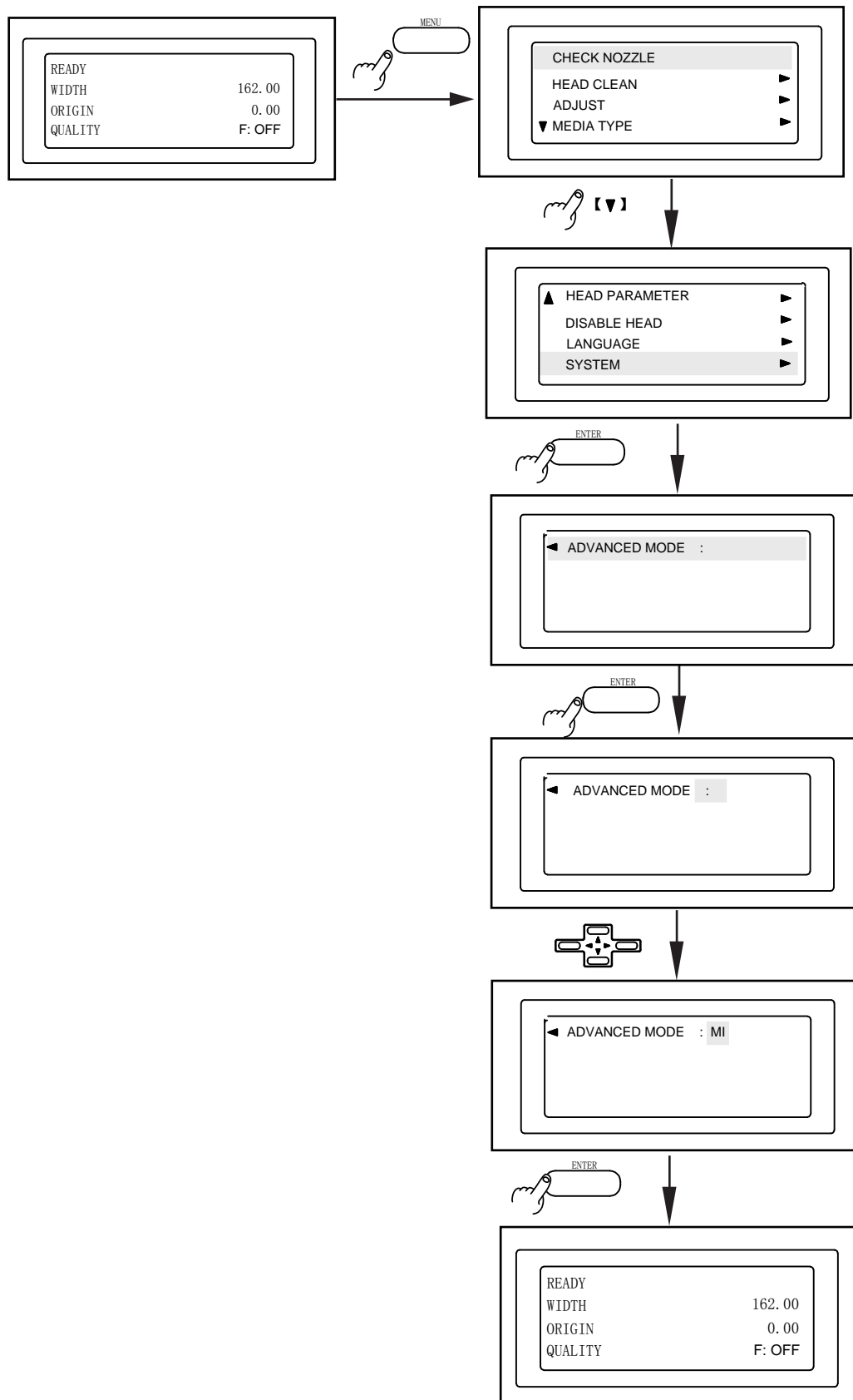
read the file ' readme.txt ' carefully, then reset the correct config

4.2.1 进入高级模式



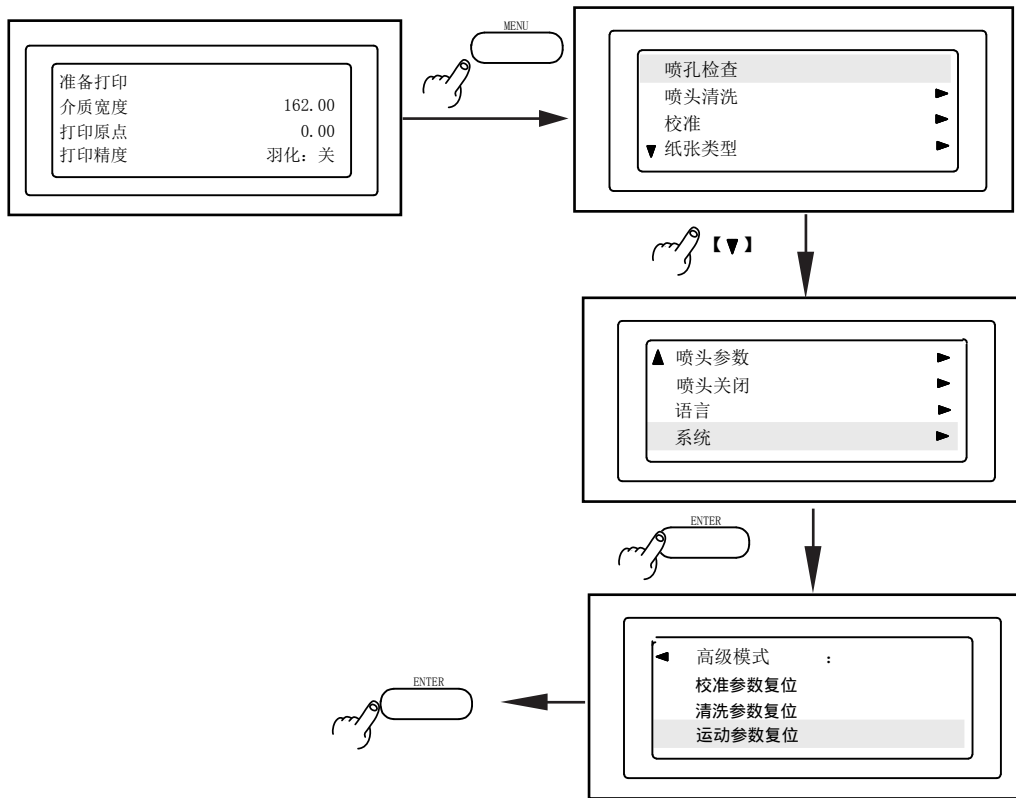


4.2.1 go to advanced mode

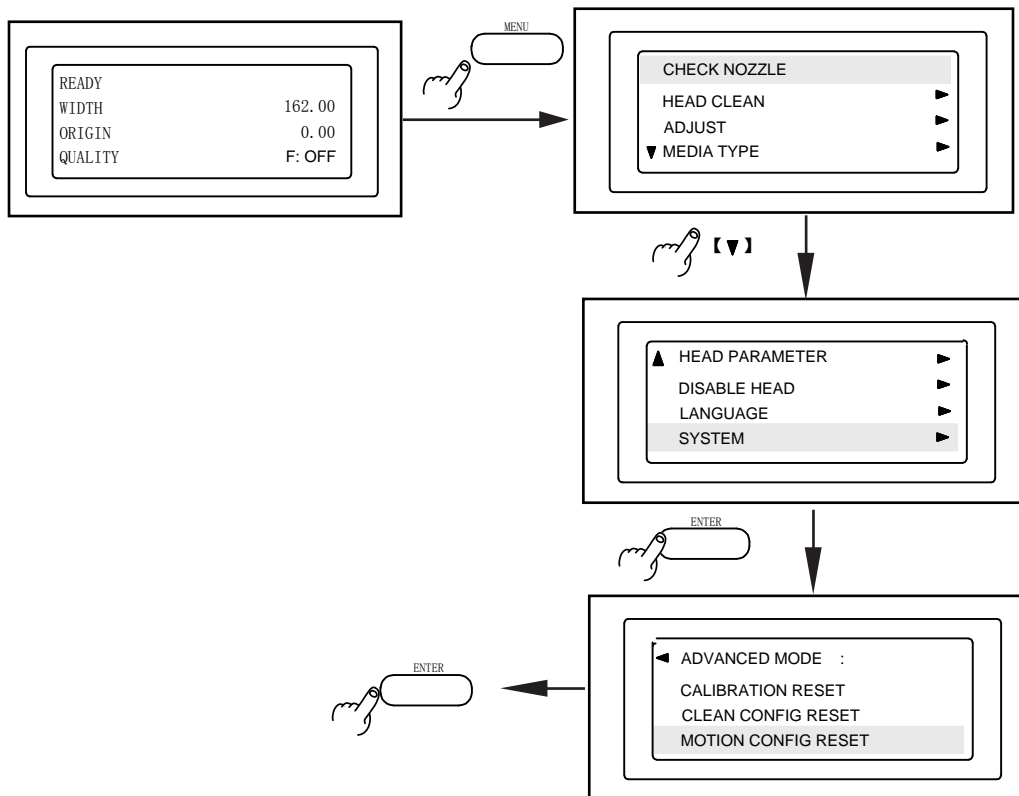




4.2.2 参数复位



4.2.2 reset config

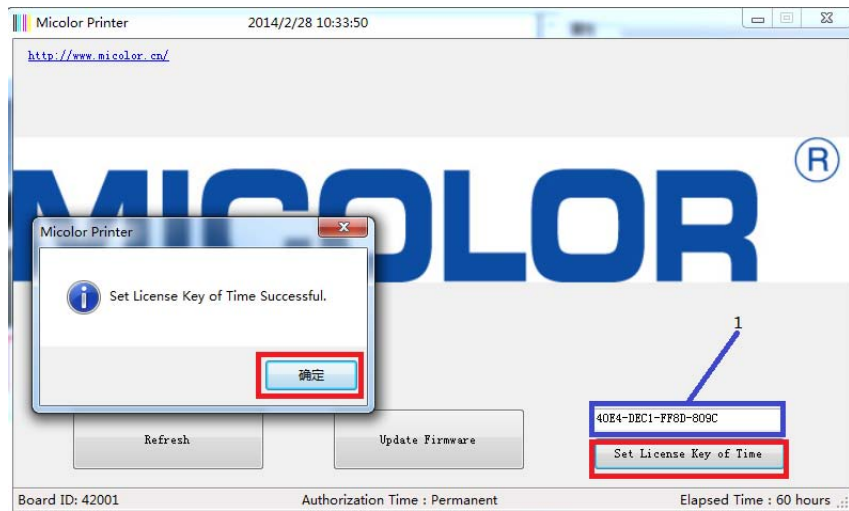


4.2.3 重启打印机, 升级结束。

restart printer, updating is complete..



5 设置打印机时间限制 set license key of time



在 '1' 处输入时间码，点击 'set license key of time'，然后点击 '确定'。
input license key at '1', and click 'set license key of time', then click 'YES'.

点击 'Refresh'，限制时间会更新。
click 'refresh', information will be refreshed.

